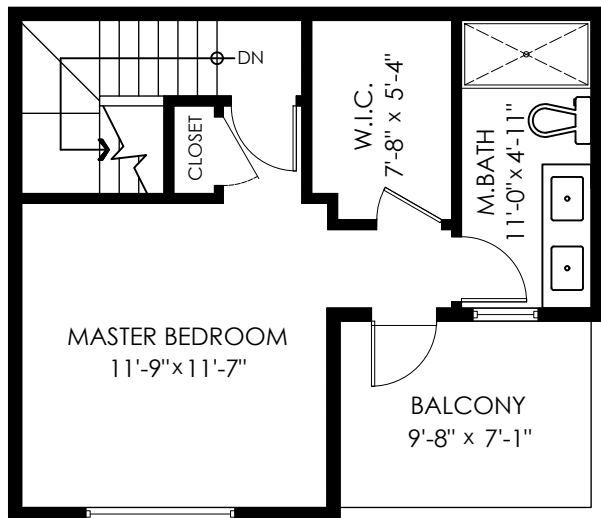


Main Floor:	434 sq.ft.
Upper Floor:	441 sq.ft.
Top Floor:	372 sq.ft.
<b>Total:</b>	<b>1,247 sq.ft.</b>

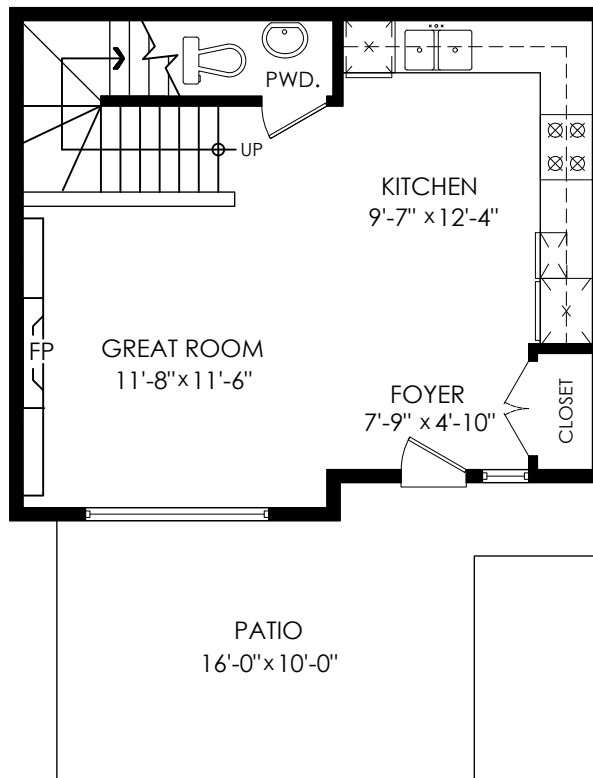
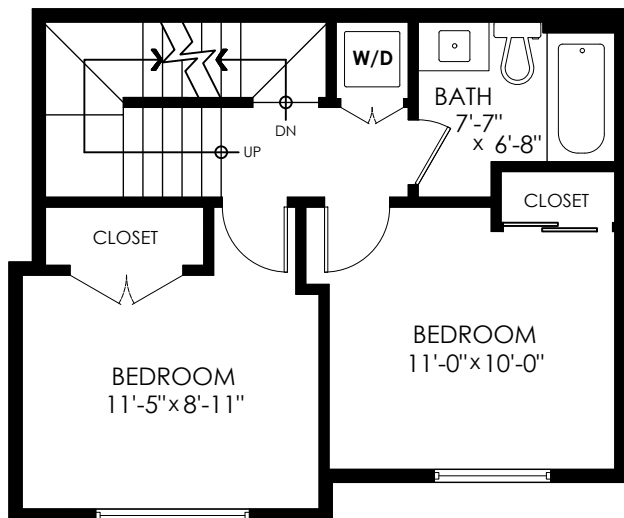
## 4 - 3508 Mount Seymour Parkway, North Vancouver

Crawl Space (Unverified):	20 sq.ft.
Patio:	182 sq.ft.
Balcony:	69 sq.ft.
<b>Total Extras:</b>	<b>271 sq.ft.</b>



### Crawl Space (Not Shown)

Ceiling Height: 3'  
3'-0" x 6'-6"



SCALE  
0' 5'

