

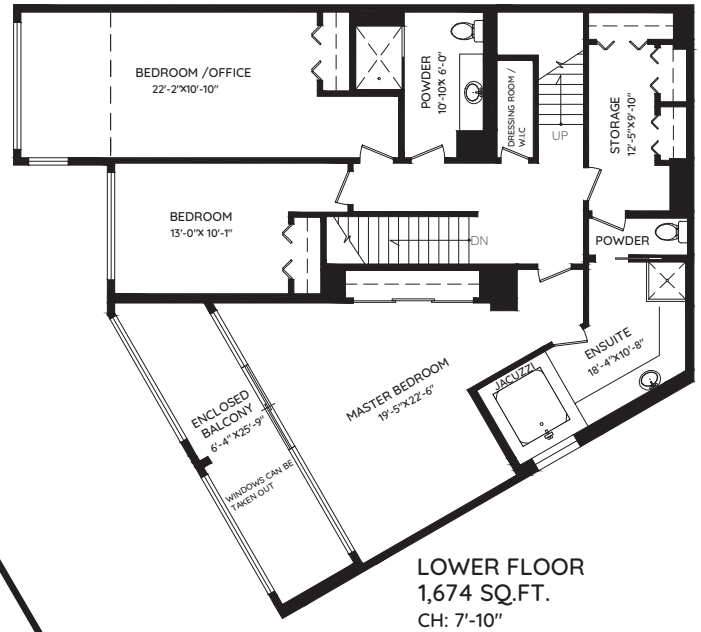
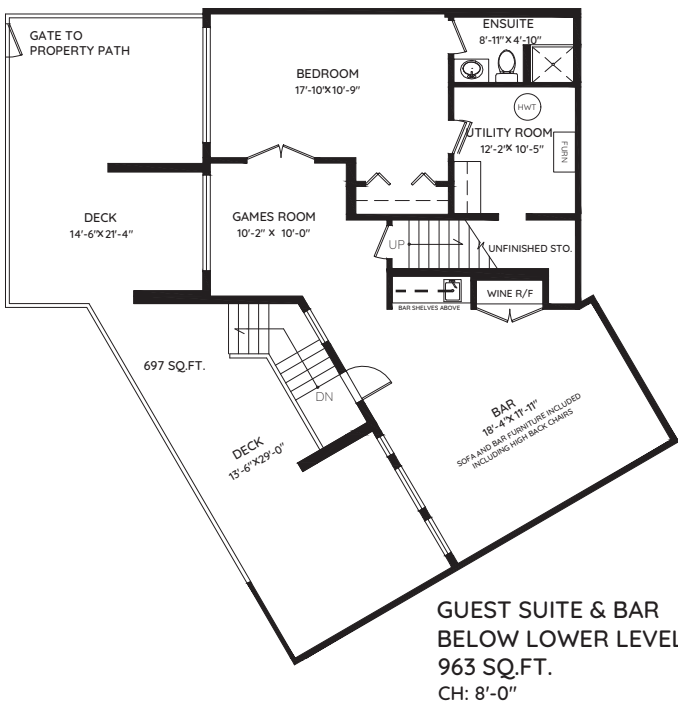
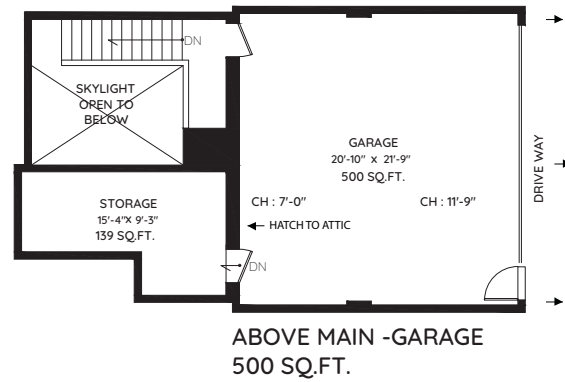
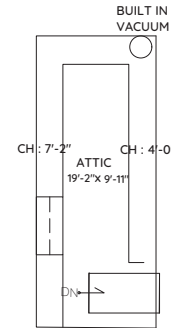
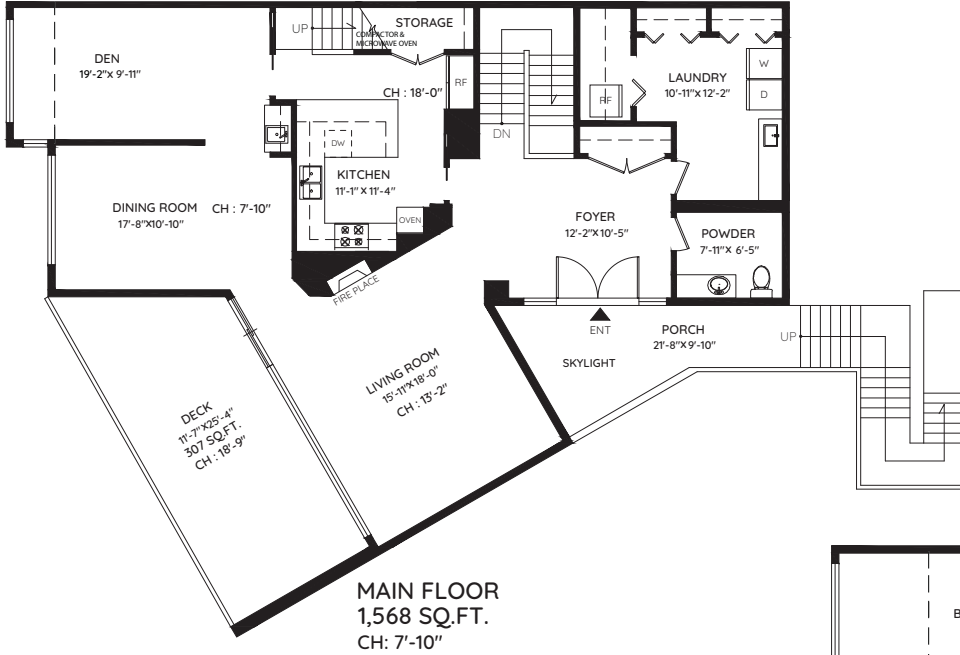
7353 YEW STREET

VANCOUVER, BC



LESTWAROG
VANCOUVER WESTSIDE & DOWNTOWN SPECIALIST
604.671.7000 | les@6717000.com

MAIN	1,568 SQ.FT.	PORCH	268 SQ.FT.
LOWER	1,674 SQ.FT.	DECK	1004 SQ.FT.
BASEMENT	963 SQ.FT.	GARAGE	639 SQ.FT.
TOTAL	4,205 SQ.FT.	ATTIC	195 SQ.FT.
	TOTAL		1,911 SQ.FT.



The floor plan and the measurements are approximate and are to be used for advertising usage only. Not suitable for architectural or construction. E&O Insured Total sq.ft. is calculated using method ANSI - Z765



Booked on
the Pixlink App™

